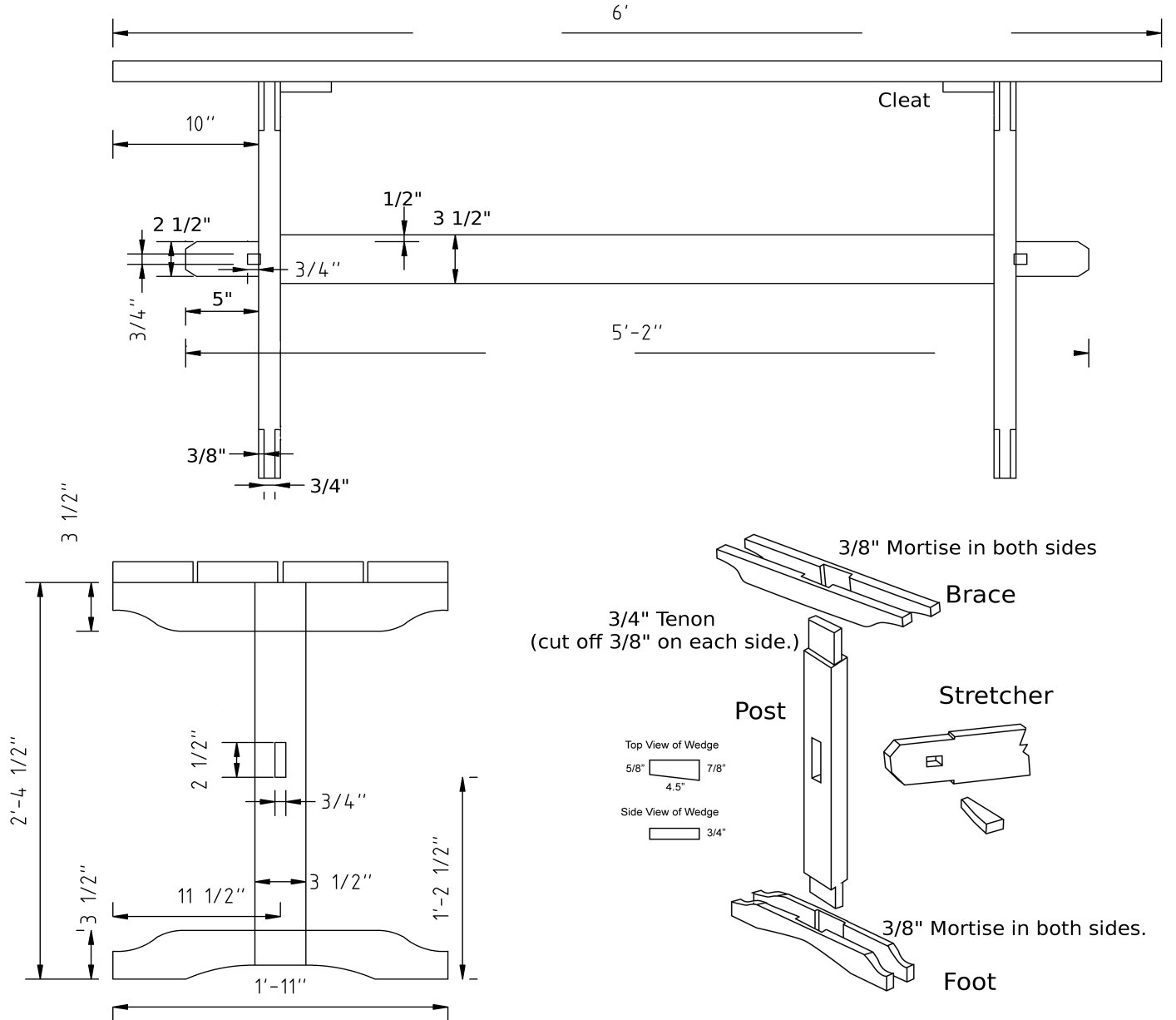


Trestle Table Plan



Materials

Top	2 pieces	2" x 12" x 6'
OR Top	4 pieces	2" x 6" x 6'
Top cleats (2)	2 pieces (total)	1" x 4" x 23"
Stretcher	1 piece	1" x 4" x 62"
Braces (2)	4 pieces (total)	1" x 4" x 23"
Posts (2)	2 pieces (total)	2" x 4" x 28.5"
Trestle Feet (2)	4 pieces (total)	1" x 4" x 23"
Wedge (poplar, 2)	2 pieces	See plan
Screws	24	#10 x 1" flat head (countersunk)

Steps in making the table.

Step	Procedure
1	Read and understand the plan. Get the material and cut to length – Hand, Table or Skil Saw.
2	Make one set of ½ mortises in braces and feet with table saw and chisels. Use final dimensions to mark leg tenons.
3	Make the tenons on leg ends with table saw and chisels (or band saw.)
4	Drill pilot holes and screw feet and braces together. Make sure legs fit.
5	Make cardboard template, shape feet and braces on band saw.
6	Narrow stretcher ends with band saw to make shoulder. (Stretcher tenons.)
7	Mark and cut leg mortises with drill press and chisels.
8	Cut wedges on band saw.
9	Sand and dry fit pieces. Mark wedge mortises on stretcher.
10	Make stretcher mortises with drill press and chisels.
11	Screw legs together. Trim off excess on bottom of feet.
12	Assemble top with cleats.
13	Apply finish and assemble table.